



BEAUFORT GREEN

Armadale Road, SW6

£900,000



A charming, three bedroom Maisonette close to Fulham Broadway and West Brompton. The property is a traditionally finished, split level victorian conversion. It benefits from it's own front door, private outdoor space and being situated on a quiet residential road.





BEAUFORT GREEN



BEAUFORT GREEN

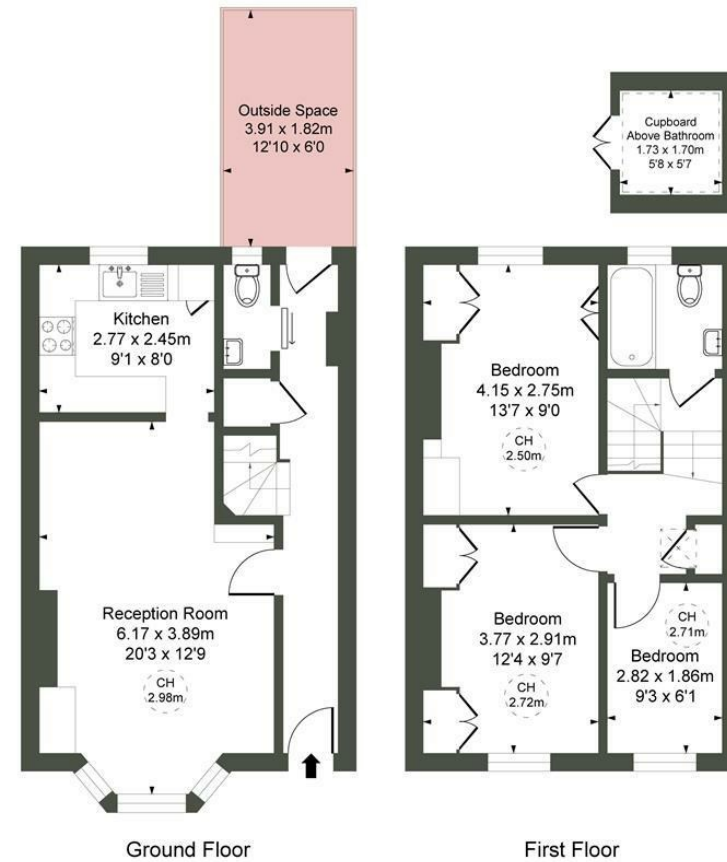
At a Glance.

- Split Level Period Conversion
- Own Front Door
- Private Outdoor Space
- Three Bedrooms
- Share of Freehold
- Close to Transport Links

Armadale Road,
SW6

GIA
(Approx)

81.52 sqm / 878 sqft



CH refers to the ceiling height in this plan. This floor plan is provided for illustrative purposes only and has been prepared in accordance with the RICS Code of Measuring Practice. It is not to scale, and all measurements and areas are approximate and should not be relied upon for accuracy. The plan should not be used for valuation or other decision-making purposes. Whilst every effort has been made to ensure accuracy, no responsibility is accepted for any errors or omissions.

BEAUFORT GREEN

02074594100

charlie@beaufortgreen.co.uk

263 New Kings Road
London
SW16 1DB